

Aoralscan 3 & Neo

SHINING 3D Intraoral Scanner
JUST SCAN IT



- ✦ One Button Control
- ✦ Light Weight (240g)
- ✦ Auto Anti-fogging
- ✦ Ergonomically Designed
- ✦ Optimal Hand-Held Operation
- ✦ Dynamic LED Indicator

Technical Specifications	
Scan Field	Standard scanner tip: 16 mm × 12 mm × 22 mm Mini scanner tip: 12 mm × 9 mm × 22 mm
Scan Principle	Non-contact scanner with structured light
Dimension (L × W × H)	281 mm × 33 mm × 46 mm
Weight	240 ± 10 g (without cables)
Output	STL, OBJ, PLY
Connector	USB 3.0
Power Input	12V DC/3 A

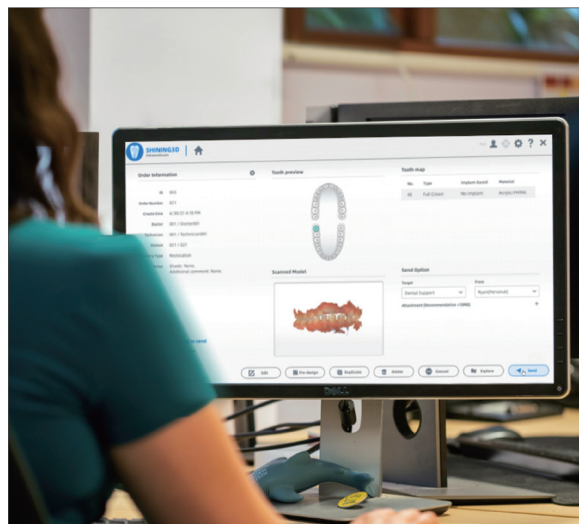
Key Features:

- ✦ Fast speed, intuitive communication with motion sensing
- ✦ High accuracy, powerful AI process and realistic color
- ✦ Data cloud platform
- ✦ Ortho stimulation
- ✦ Model making with coordinate adjustments
- ✦ Oral health report - more informed, more engaged

Cloud Platform:

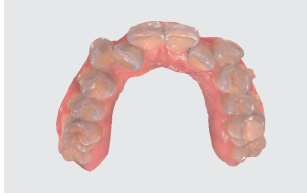
SHINING 3D's cloud data platform enables data transmission, making it convenient for data transfer and communication between clinics and dental labs.

- ✦ Online 3D Data Preview
- ✦ Order Statistics Analysis
- ✦ Order Tracking System



Aoralscan 3 & Neo

Application:



Orthodontics



6-Unit Bridge



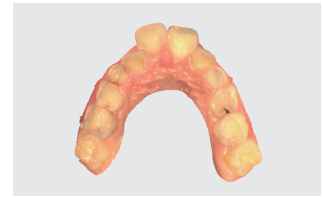
Veneer



All-on-6 Implant



Inlay-onlay

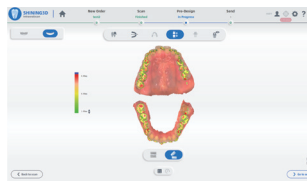


Pediatric Dental Care

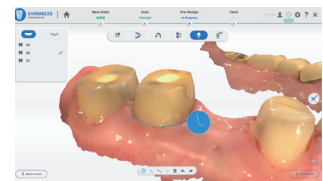
Clinical Toolkit: The clinical toolkit assists dentists to evaluate and pre-design the scanned data in their own clinic. It facilitates effective communication with dental labs to deliver quality dental work with high efficiency.



Undercut Check



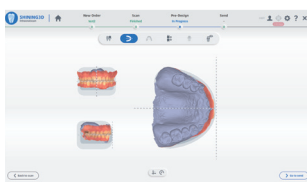
Bite Check



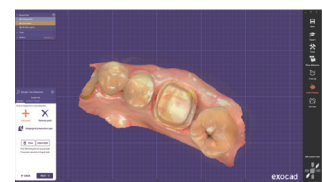
Margin Line
Auto Extraction



Tooth Marking



Coordinate Adjustment



Direct Export
Into Exocad

Ortho Treatment Simulator - See it, Believe it, Get it!

Before Tooth Setup



After Tooth Setup



Show your smile to your friends & family even before starting your treatment.

	Aoralscan 3	Aoralscan 3 Neo	Description
Scanning Tech	Optical Image Sectioning	Optical Image Sectioning	
Accuracy	10-12 Microns	10-12 Microns	
Applications	Consul OS (Orthodontic treatment simulation)	Consul OS (Orthodontic treatment simulation)	Allows for simulation of orthodontic treatments
	AI Patient report	NA	Generates AI based consultation report, sharable by print or QR
	Cre-Temp	NA	Lets user design and print Dental crowns and Bridges
	Splint	NA	Allows user to fabricate splints
	Cre IBT	NA	Allows user to fabricate IBT's
Clinical Applications	Metron Track	NA	Tooth movement tracking for aligner cases
	Edentulous Scanning	Clearance Check	Allows for scanning Edentulous scans with AI turned on
	Clearance Check	Margin Line Detection	Lets user check clearance
	Margin Line Detection	Undercut Detection	Lets user detect undercuts in preparation
Scan Speed	40 Seconds / Arch	40 Seconds / Arch	
Scan Depth	20 mm	20 mm	
Tips	5 (1 Pediatric + 4 Adult)	5 (1 Pediatric + 4 Adult)	
Weight	240 gm	240 gm	
Software Updates	Available	Available	
Current Software Version	V3.4.1.x	V3.4.1.x	