

Blazing Speed Meets Unmatched Accuracy

- | | | | |
|---------------------------------------|--|--|---|
| Fast
11 models in 9 minutes | Versatile
15+ Formlabs resins and Open Material Mode | Intuitive
Anyone can learn in 15 minutes | Accurate
A perfect fit every time |
|---------------------------------------|--|--|---|

Unprecedented print speeds. Print 11 dental models in 9 minutes.

12 Surgical Guides



48 MIN

11 Clear Aligner Models



9 MIN

8 Splints



49 MIN

63 Crowns

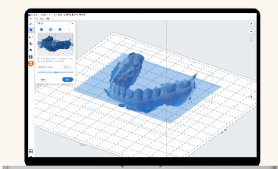


1H 15 MIN

Dentistry made easier through innovative solutions.

PreForm Dental

Go from scan to print in a few clicks with pre-optimized settings using our free print preparation software.



Auto-Dispense Resin Cartridge

A spillless cartridge with easy resin dispense simplifies resin handling for a hassle-free print process.



Flex Build Platform

Minimize interaction time and speed up part removal for a safer, easier, and more efficient 3D printing process.



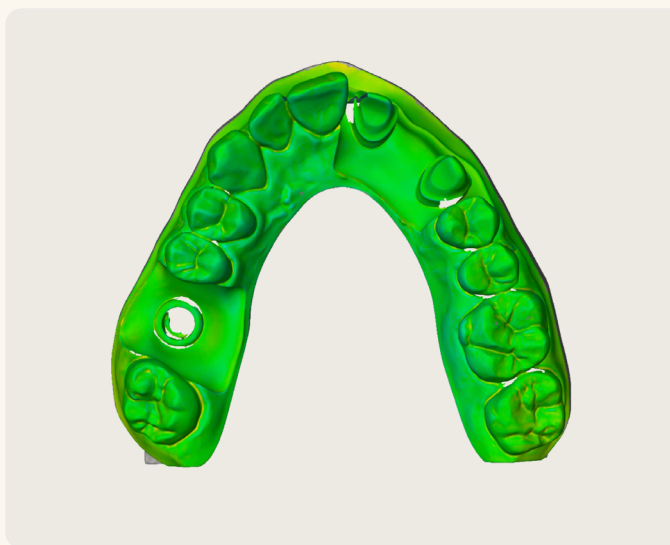


Effortlessly create parts for any dental application.

Choose from 15+ dental-specific resins including biocompatible resins developed and validated under a stringent QMS and produced in an ISO 13485-certified facility for peace of mind.

Achieve high-quality prints right out of the box with pre-optimized print settings.

Certified third-party materials and Open Platform available.



Unrivalled accuracy that matches your commitment to a perfect fit, every time.

Print dental parts with industry-leading surface accuracy of over 95% of data points within 50 µm of the original CAD data, consistent across the build platform.

Experience identical prints anywhere on the build platform powered by Formlabs Low Force Display™ (LFD) technology.

Smooth surfaces and fine features for premium looking parts you'll be proud to deliver.

FORM

4B

TECH SPECS

Technology	Low Force Display™ (LFD)	
Build volume (W x D x H)	20.0 × 12.5 × 21.0 cm 7.9 × 4.9 × 8.3 in	
Layer thickness (Z resolution)	25 - 200 microns	
XY resolution	50 microns	
Average print speed (100 µm layer height)	40 mm/h	
Maximum print speed	100 mm/h	
Resin Tank lifetime	75,000+ layers with any Formlabs material	
Printer weight	18.3 kg 40.4 lb	
Printer dimensions	39.8 × 36.7 × 55.4 cm 15.7 × 14.5 × 21.9 in	
Warranty and service	One-year warranty included Paid service and extended warranty options available	
Software compatibility	Windows 10, 64-bit (version 1809) and up	Mac OS X 10.12 and up
File types accepted	STL, OBJ, 3MF	

GET IN TOUCH

US

+1 833 489 0545
sales@formlabs.com

EU

+49 30 5200 6329
eu-sales@formlabs.com

UK/IE

+44 8081 341875
eu-sales@formlabs.com